

# The FCRM Review

Tom Dauben  
Environment Agency  
Flood and Coastal Risk Management  
19<sup>th</sup> November 2012

# The journey so far.....

## Making space for water

Taking forward a new Government strategy for flood and coastal erosion risk management in England

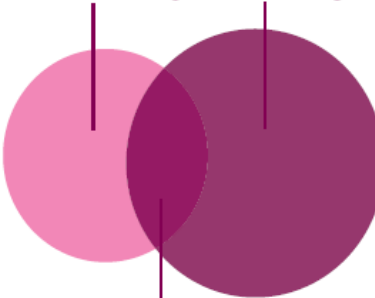
First Government response to the autumn 2004 Making space for water consultation exercise

March 2005

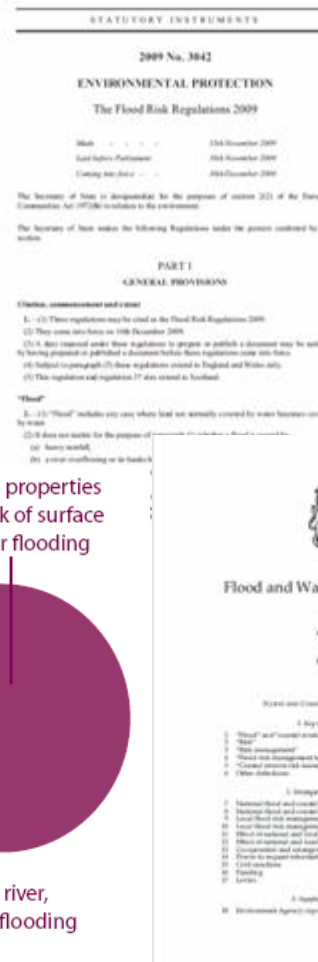
Learning lessons from the 2007 floods  
An independent review by Dr. Alastair Pitt

2.4m properties at risk of river and coastal flooding

3.8m properties at risk of surface water flooding



1m properties at risk from river, coastal and surface water flooding



Understanding the risks, empowering communities, building resilience

The national flood and coastal erosion risk management strategy for England



# EA Strategic Overview Role

- ➔ Delivering, with others, the National FCERM Strategy for England.
- ➔ Summarised as:
  - ➔ Understanding risks from all sources of flooding and coastal erosion
  - ➔ Providing leadership and direction
  - ➔ Working with others to enable joined up delivery
  - ➔ Delivering the same with less funding
  - ➔ Improved our Incident Response capability

# FCRM Review

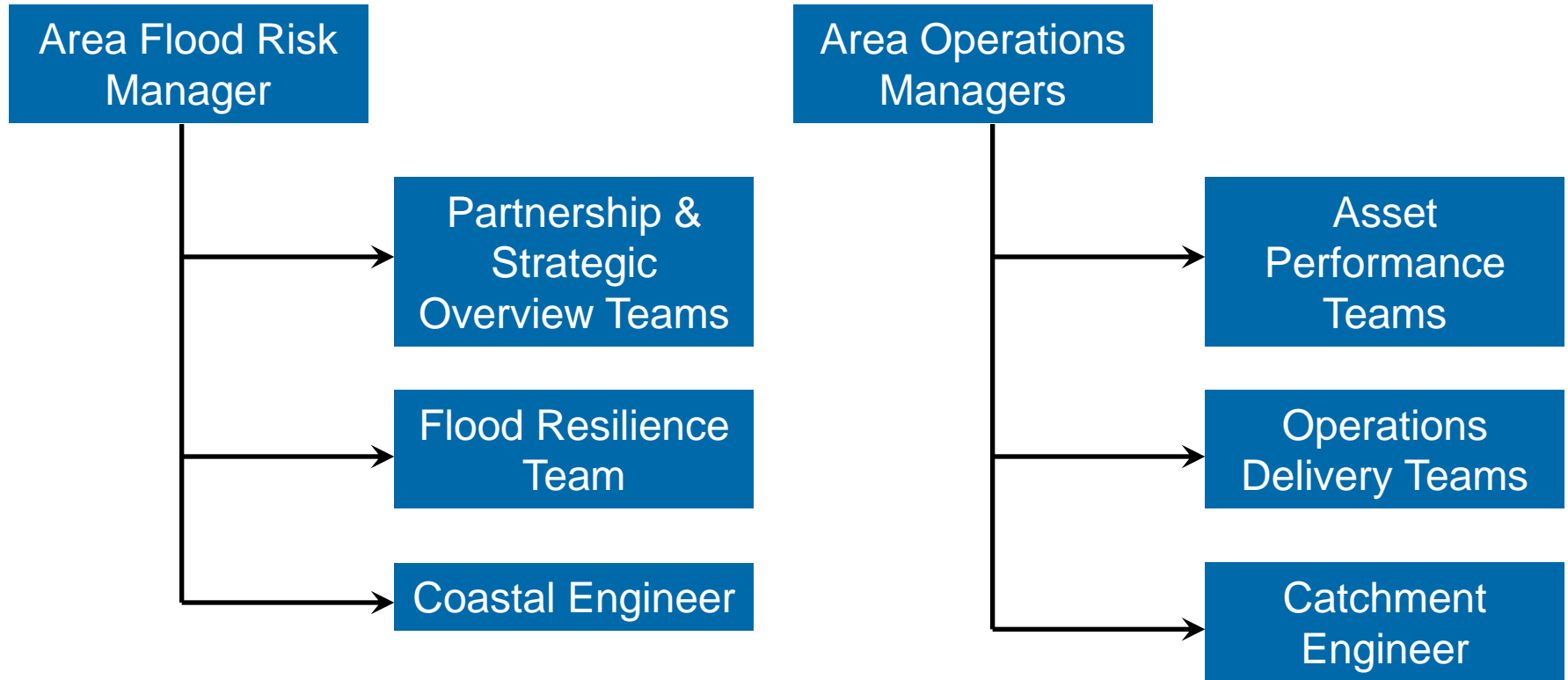
## ➔ Phase 1 (FCRM Review)

- ➔ Restructure our teams
- ➔ More outward facing
- ➔ Getting the right people in the right place
- ➔ Better emphasis on working with others

## ➔ Phase 2 (Excellence in FCRM)

- ➔ Improving our processes
- ➔ More efficient delivery
- ➔ Cost savings

# FCRM Structure



# What have we achieved since June?

- ➔ Responded to summer flood events
- ➔ **585** Planning Apps, approx **150** Consents
- ➔ **547** Information Requests
- ➔ Indicative Capital allocation
  - 2013/2014 - £25m
  - 2014/2015 - £61M
- ➔ Our schemes are progressing

# Priorities for the next year –all teams

- ➔ To be leaders and professionals in flood risk (both internally and externally)
- ➔ Linking up all strategies
- ➔ Continue to deliver our statutory obligations and KPIs
- ➔ Getting stability in the teams and addressing skills gaps

# Priorities for the next year – FRT

- ➔ Implement an area programme for FCRM community engagement
- ➔ Recruit to our incident management rotas
- ➔ Develop duty officer skills, knowledge and tools



# Priorities for the next year – PSO

- ➔ Develop a strong, manageable and deliverable MTP for all RMAs
- ➔ Support our LLFAs and strategic flood partnerships
- ➔ Build on our good evidence base
- ➔ Produce Local Authority briefing packs using the Communities at Risk data.
- ➔ Prioritising our planning consultations taking a risk based approach

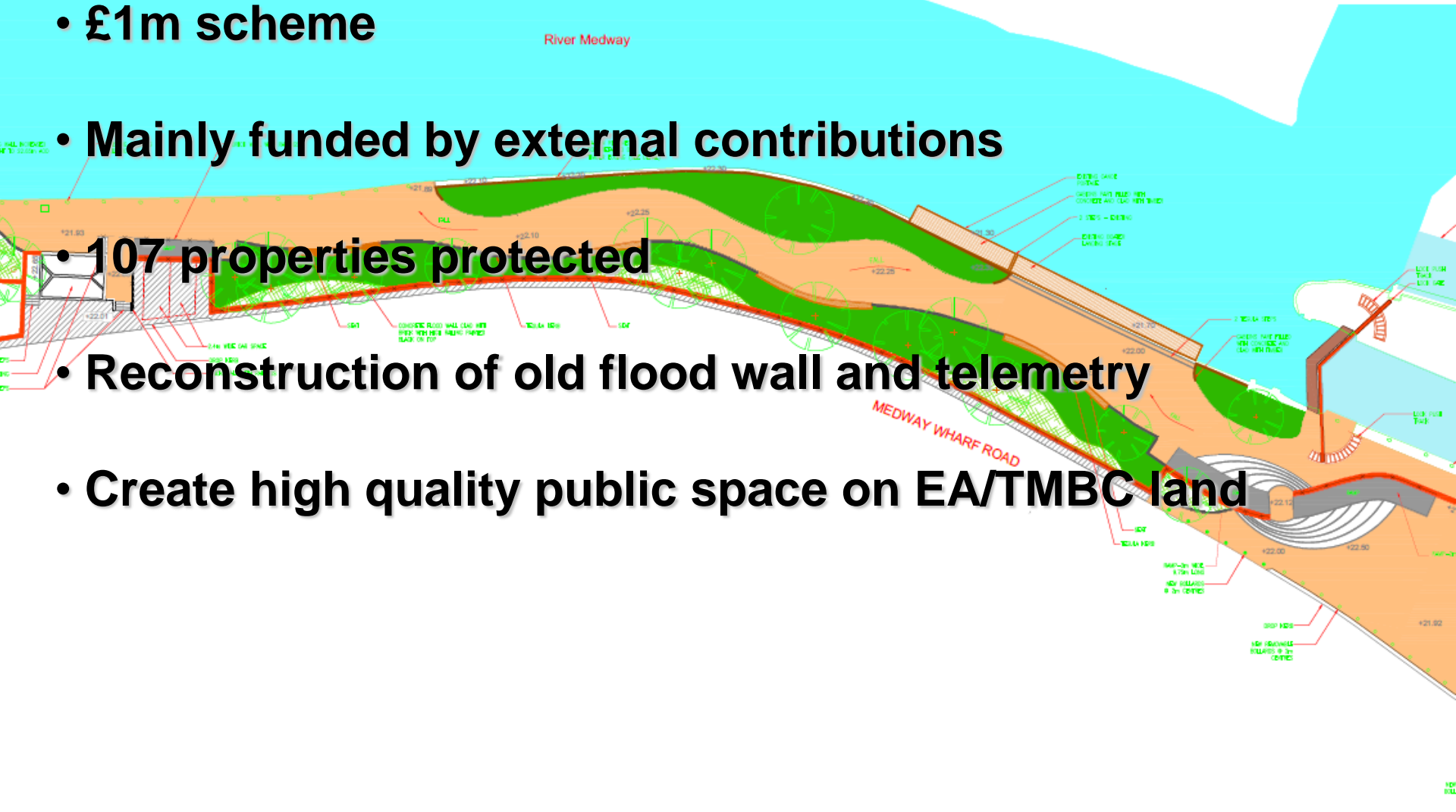
# Deal Sea Defences

- Approx £10 million, £7.3 million for construction phase
- Improving 1 in 20 SoP defence to 1 in 300
- Protecting 1,418 homes and 148 commercial properties
- Partnership working with DDC, shared frontage
- 4-5 month construction phase
- Shared BMP to deal with future beach maintenance

12:46 15/SEP/2012

# Tonbridge Town Lock Wall

- Partnership scheme between EA, TMBC, developer
- £1m scheme
- Mainly funded by external contributions
- 107 properties protected
- Reconstruction of old flood wall and telemetry
- Create high quality public space on EA/TMBC land






# North Kent Coast Modelling

- 1D/2D Coastal flood model
- Dartford Creek Barrier to Margate
- Completes model coverage of Kent coastline
- £110k budget over two year programme
- Workshops with Local Authorities
- Due for completion in December 2012
- Improve understanding of flood risk
- Developing visualisation tools for incident management



# Dungeness Borrow Pit

- New planning application to re-open 70 year old site
  - Joint application with EDF
  - All other viable sources investigated
  - Significant work to make operation more sustainable
  - Natural England supportive
  - Many public concerns expressed
  - Able to meet all KCC requirements for noise and vibration
  - Able to operate site safely and unobtrusively
- 

# Emergency Response



19/07/2012

# Questions

